



IFYE NEWS

The Official Publication of the International
Four-H Youth Exchange Association of the USA



Winter/
Spring 2010

52nd National IFYE Conference "World Wide and Wonderful - Come Reconnect in WV" Charleston, West Virginia - August 3-7, 2010



World Wide and Wonderful – Come Reconnect in WV is the theme of the 52nd National IFYE Conference being held August 3-7, at the Embassy Suites Hotel (lower left) located in the capital of West Virginia—the city of Charleston. West Virginia alumni look forward to giving all who come their way a big Appalachian Mountain welcome!

The conference gets underway with registration at the hotel on Tuesday afternoon, August 3, and ends with a breakfast buffet and closing program early Saturday morning, August 7.

There will be celebrations honoring the 5th (2005), 10th (2000), 15th (1995), 25th (1985), 40th (1970), and 50th (1960) year anniversary alumni groups.

The program will include a keynote speaker, educational workshops, 4-H International sessions, regional and association meetings, tours, plenty of entertainment including a "Night at the Ball Park," the West Virginia Dance Ambassadors, and a historical presentation - "Coal Camp Memories" (see below).

Conferees will enjoy the "IFYEMercado" (Marketplace), at which they'll have an opportunity to shop for Mexican and Latin American items in support of a mission project in Guatemala. Plan to bargain with a friendly Mercado staff.

There are full-day and half-day tours during the conference and several optional Saturday post-conference tours following the closing events (see page 8). The tours during the conference are included in the conference fee.

Conference information can be found at <http://4-hyd.ext.wvu.edu/events/ifye> including registration information and form. The registration form is also available in the fall 2009 issue of the newsletter.

Contact Lindsey Kalivoda, registration coordinator, about possible roommate options - lindsey.kalivoda@mail.wvu.edu/ or at 304-293-2696.

Join in for this unique visit in Wild Wonderful and Friendly West Virginia. ★

Coal Camp Memories



Hallie Marie was a little girl and life was simple. She walked to a one-room school. Her biggest problem was "mean ol' Jimmy." Time passed in her 1920's WV coal camp. Hallie Marie grew up, fell in love with Jimmy, married and raised a family. Life became less simple. Jimmy died in a mine accident, Hallie was left to raise her children alone.

"Coal Camp Memories" is a one-act play, written and performed by Karen Vuranch. Karen researched life in the West Virginia coal fields by talking to those who lived in the coal camps. Hallie Marie's story is a composite of many people who shared their memories. Vuranch ages in front of the audience, growing from an exuberant 10-year-old to a demure teenager, then a young wife, and finally an old woman wise with years. During scene changes, a musician plays traditional Appalachian music. Coal Camp Memories is a gentle and poignant story that recreates an era while it delights audiences of all ages. ★





IFYE Association 2010 Board of Directors

Region A

Carol H. Hagen, CT-Sweden 67

47 Constitution Square
Mansfield Center, CT 06250-1501
860 - 423-9026

carolhhagen@aol.com

Grace E. Elliott, DE-Israel 60

3330 N. Leisure World Boulevard, 1014
Silver Spring, MD 20906-5655
301 - 598-2704

gelliott07@yahoo.com

Trudy Huskamp Peterson, IA-Finland 66

810 Massachusetts Avenue, NE
Washington, DC 20002-6016
202 - 547-7969

archivesthp@aol.com

Region B

Judith Hahne Stewart, MO-UK 78

7908 Coleridge Drive
North Little Rock, AR 72116-4015
501 - 834-8304

jstewartmedia@yahoo.com

Marian Pike Huey, MI-Norway 55

1615 Daytona Avenue
Holly Hill, FL 32117-1712
386 - 673-1242

hueymj@aol.com

Eleanor Inman Smith, GA-Ireland/NI 57

5511 Birdwood Road
Houston, TX 77096-2121
713 - 667-5911

eleanors@swbell.net

Region C

Karen Fleck Bonnet, ND-Netherlands 71

6119 62nd Street NE
Bismarck, ND 58503-1502
701/221-2774

klbonnet@extendwireless.net

Arthur L. Deisher, OH-UK 71

3912 County Road 130
Bellefontaine, OH 43311-9359
937/599-2559

adeisher@charter.net

Alan E. Lambert, SD-Germany 80

600 S. Kiwanis Avenue 315
Sioux Falls, SD 57104-3726
605 - 366-6107

alanelambert@yahoo.com

Region D

Kimberly K. Reaman, NE-Jamaica 84

1419 E. Sheridan Street
Laramie, WY 82070-4151
307 - 760-8703

kreaman@uwyo.edu

Connie Harms Fukudome, KS-Netherlands 71

14115 177th Avenue NE
Redmond, WA 98052-1170
425 - 242-0834

cfukudome@gmail.com

Sheila Calhoun Peterson, MI-Kenya 67

3152 Pioneer Avenue
Juneau, AK 99801-1962
907 - 463-3863

sheila_peterson@legis.state.ak.us

Immediate Past President

Larry J. Zilliox, MN-Botswana 68

360 Karens Way NW
Alexandria, MN 56308-4678
320 - 762-8502

lakemina@gctel.net

IFYE Association of the USA

President's Message

At the beginning of last year, I wrote that we would "Re-define in 2009!" We did that as evidenced by the following accomplishments:

- Identified one or more contact persons in each of the 50 states.
- Increased the number of updated addresses, E-mail addresses and phone numbers of those on the database and the database is maintained by several people on the board making communication with all of you easier and faster.
- Revised Bylaws and Policies and Procedures Manual are published on the web page. Please go to www.ifyeusa.org and view the revised Bylaws.
- We will be voting to ratify those Bylaws at the West Virginia Conference, August 3-7. I'd love to see you at the conference, but whether you attend or not, I would appreciate any comments you have by E-mail or mail before the conference.
- Made numerous updates on the IFYE webpage.
- Identified, with the help of the Foundation President, a new conference call company so that our board calls save a small amount of money in the treasury.
- Encouraged learning as much as we can about the IFYE Exchange Program and other programs carried out by States' 4-H International Exchange Program.

All board members worked hard in 2009 to encourage dues payments and increase participation. One hundred and fifty-nine people paid dues in 2009. This represents less than 6% of those on the database who could be paying dues, but almost double the number from the previous year. The Association has lots of room to grow.

But as a popular songwriter and performer in the 70s, Karen Carpenter sang, "We've Only Just Begun!" The world needs our exchange program now, more than ever. As our alumni population ages and our numbers wane, we must act now to get a sustainable system in place. Otherwise, those in the future will not have the opportunity to experience the unique cultural exchange that we all cherish.

I, personally, would like to see the IFYE exchange program under a national umbrella as it was when I was an IFYE. With that goal in mind, by the end of February I plan to assemble a committee to work on this endeavor. Whether the connection is with the National 4-H Council or another national entity will be but one decision for this committee to make. Another area the committee could explore is the possibility of hiring an Executive Secretary (or other title) to assist the association board in the day-to-day management of the association plus coordinate exchange activities with the present state coordinators, thus solidifying the continuance of the IFYE exchange program for those delegates 19-30 years of age. There are alumni who possess the passion for IFYE to share their time and expertise to support these efforts, but we need a committee to provide leadership to advance the cause. The task will not be easy, but the challenges will not be ones that overshadow the importance of continuing this program. You can assist the efforts in two ways: first, by sharing your views and opinions. Please contact me or any other board member either by phone or E-mail. Secondly, if you support our efforts and you are not a life member, support our cause by paying your annual dues. While we made gains in 2009 on membership, 159 out of a population of 3,700 (2653 with valid addresses who are not life members) is not very impressive.

2009 afforded us the opportunity to lay the foundation blocks upon which we can rebuild the IFYE program. It has been a pleasure to serve as your President and I welcome your continued emails, letters and phone calls. I consider it an honor and privilege to continue with an outstanding Association Board as we attempt to build on the foundation laid in 2009. But it is only with your support and participation that we will be able to look back on 2010 and measure it with success.

Connie Harms Fukudome, KS-Netherlands 1971, President ☆

President **Connie Harms Fukudome**

Vice President **Alan Lambert** ☆ Secretary **Sheila Huskamp Peterson** ☆ Treasurer **Art Deisher**
Officers' Contact Information — Left Column

Ex-officio Members of the Board of Directors

President, IFYE Foundation

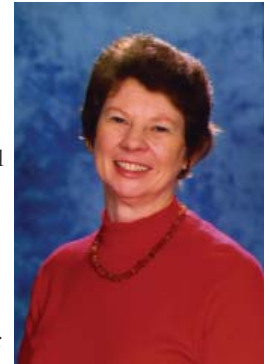
Norman C. Bauer
MI-Turkey 1957
111 Woodland Trail
Anna, IL 62906-3906
618 - 833-3228
nbauer@aj.internet.net

Financial Advisor

Roger L. McCoy
MO-New Zealand 68
7017 T. Gabbert Drive
Pleasant Valley, MO 64068-
816 - 415-9085
r.mccoy69@sbcglobal.net

Editor, IFYE News

Melvin J. Thompson
MI-Turkey 1953
5811 Lone Oak Drive East
Bethesda, MD 20814-1843
301 - 493-5301
melvinhi@aol.com





Two Long-time 4-H Families Sprout an Eagle Scout! 4-H International Busy Schedule Ahead! Seeking Alumni - Fellows, Staff, IVS/PC Volunteers!

Two long-time 4-H families - the Krills of Ohio and the Thompsons of Michigan have produced an Eagle Scout! It's exciting to be a part of this memorable event! And Great-grandpa Thompson, who served many years as both a 4-H and Boy Scout leader, would be especially proud! Marshall J. Thompson of Bethesda, Maryland, son of Dean, MD-Egypt/Israel 1976, and Jane Krill Thompson, OH-Israel/Netherlands 1976/1978, (above left), was awarded the rank of Eagle Scout at a Court of Honor in February. Proud grandparents (above right) at the celebration included Cleon and Dema Krill (left) of Edgerton, Ohio, and Mel, MI-Turkey 1953, and Linda Thompson of Bethesda, Maryland. 4-H and Scouts - two great youth organizations!

Once again, we have a packed issue of IFYE News. Everything from upcoming events, reports on recent programs, reflections by alumni on accomplishments and memories, memberships, contributions - financially and in-kind, artists and authors amongst us, and a tribute column to those we miss, mourn and remember!

Remember the poem, "Peace," by Linda Murray, WY-Uganda 1969, in the last issue; now we have "IFYE Homeland," (below) by Delbert Frericks, SD-Switzerland, as he departed for home in 1964.

2010 and the years ahead look exciting! The National IFYE Conference in West Virginia, August 3-7, has an exciting program planned - an opportunity to renew and create new friendships and get to experience Appalachian Mountain hospitality (pages 1 and 7). At the same time, the second African 4H leadership training seminar will be taking place in

Tanzania, East Africa (page 4) - sponsored by the Finland and Tanzania 4H programs. Conference theme - Peer Leadership.

As we go to press, we have just learned that an Intergenerational Two-Island Study Tour is planned for Hawaii, October 17-23. It is a program introduced by Dr. Matthew S. Kaplan, Associate Professor, Pennsylvania Extension Service, and speaker/consultant at the 2007 National IFYE Conference. Information is available at www.travellearnstudy.com

We expect to have information on the Asia Pacific (ASPAC) IFYE Conference in Bangalore, India, in early November 2010, and the 10th World IFYE Conference in Thailand in November 2013, for the next issue of IFYE News.

Attention! Former IFYE Fellows (including alumni who worked with 4-H International programs at National 4-H Council with various titles), 4-H exchange alumni who served as Peace Corps Volunteers (with 4-H or Other Peace Corps programs), and 4-H exchange alumni who served with the International Voluntary Services (IVS) program. We are trying to document participation - which program, dates and countries involved, etc. Please send information to me via e-mail or regular mail - addresses bottom of page 2.

Thanks for the many notes - personal and otherwise, written during the conference in Indiana and since. It is always good to hear from alumni and to share accomplishments, friendships, your ideas and thoughts. Happy Spring!

Mel Thompson
MI-Turkey 1953, Editor ☆

IFYE Homeland

*Oh little land so far across the sea,
Why was it you took your hand and beckoned me?*

*You brought me from a place so flat I can see for miles,
And gave me mountains to face
while I learned to know new smiles.*

*You brought me by ship with an IFYE crew,
Somewhat a grand trip, Yet we had work to do.*

*With a dictionary in hand and ears opened wide,
We learned to speak in your land with those at our side.*

*We learned a new life (at times with hand rake),
Perhaps there was strife but 'twas much at stake.*

*Six months are now gone, But now in my heart
Live thoughts of friends won, 'twill be hard to depart.*

*I think I now know why I was your IFYE,
You were yearning to show how others live free.*

Delbert L. Frericks, SD-Switzerland 1964



4-H International - Looking Ahead!

4-H International Celebration and Luncheon

National Capital Area - April 2010

National IFYE Conference - August 3-7, 2010

Charleston, West Virginia

European IFYE Conference

July 31-August 7 - Salzburg, Austria

Intergenerational Study Tour - October 17-23, 2010

Hawaii - Oahu and Maui

ASPAC - Asia Pacific IFYE Conference - 2010

November 10-14, 2010 - Bangalore, India

National IFYE Conference - June 26-30, 2011

Waterbury, Connecticut

Peace Corps 50th Anniversary Celebration - 2011

National Mall - Washington, DC - September 22-25

National IFYE Conference - 2012

Hosting Bids/Application due by April 15, 2010

World IFYE Conference - Fall 2013

Thailand - Dates and Location to be Announced ☆



Amongst those attending the South Dakota celebration were (l-r) Elaine Hagenow Kohl, IN-Sweden 1956, and her husband, Robert Kohl; Aletha Symens Prouty, Scotland 1958; Adele Clark Sudlow, Sweden 1951 - South Dakota's first IFYE; Eleanor Burkman (spouse of Donald W. Burkman, Finland 1953, who died in 1990); James O. Pedersen, MN-India 1953, and his wife, Lyn Pedersen; Wanda Johnsen Osman, Netherlands 1980, and her niece, Lacey Johnsen, Austria/Luxembourg 2009.

South Dakota Celebrates 60th Anniversary of Participation in 4-H International Programs

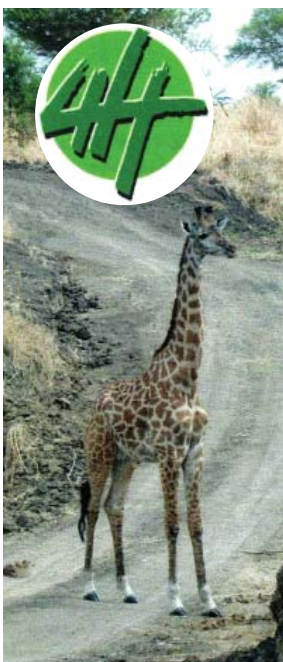
South Dakota 4-H International exchange alumni celebrated their 60th Anniversary with a gathering of 77 alumni and guests in January in Brookings. The organizing committee of alumni and spouses developed a banquet and program that brought back memories with a powerpoint presentation of the past 60 years.

Alan Lambert, President of the South Dakota Alumni Association, and Vice President of the National IFYE Association, served as emcee. He introduced alumni from each decade who shared participation. Adele Clark Sudlow, Sweden 1951, South Dakota's first IFYE, gave a brief history of IFYE's early days and elaborated on some of her personal experiences. Two alumni from each decade relived some about their cultural experiences and how it has influenced their adult lives. Lacey Johnsen, Austria and Luxembourg 2009, shared her recent IFYE experience with a powerpoint presentation, souvenirs and traditional dress. A current FLEX (Future Leaders Exchange) participant and host family, and 2010 South Dakota's exchange delegates were introduced.

Many shared examples of events that changed their lives, often noting that orientation, no matter how intensive, does not compare with immersion in another culture. Several commented that "even though we are from different countries and cultures, we are not all that different," and "I have greater tolerance, respect and empathy for others because of my experiences."

The program also emphasized the current outbound programs and collected significant scholarship donations to further continue South Dakota 4-H International Programs. South Dakota participates in the summer LABO inbound and outbound exchanges, the FLEX high school year-long program with Eastern European countries, and hosting adult leaders from Taiwan, as well as the traditional IFYE exchanges.

South Dakota is proud of its committed alumni and other volunteers, who administer, finance and operate these programs. The South Dakota Cooperative Extension Service and State 4-H office assist in promoting these important programs. ☆



Tanzanian 4H and Finnish 4H Peer Leadership Seminar August 2-15, 2010 Tanga, Tanzania

Finland 4H and Tanzania 4H recently announced their second International Training Seminar - Peer Leadership, to be held at the Kange 4H Headquarters Center (right) in Tanga, Tanzania, August 2-15, 2010. The main objective is to further advance and establish an African 4H Network and strengthen 4H programmes in Africa and globally.

The first seminar on Entrepreneur Leadership, held in February 2009, was very successful with 40 seminar participants from eight countries in Africa, three in Europe and the United States.

The Peer Leadership Seminar will focus on issues from the African perspective. European and North American youth organizations will have an excellent opportunity to increase their knowledge of the social and cultural aspects of life in Africa, in order to be able to intensify the cooperation with African 4H and rural youth organizations. Capacity building of staff and key volunteers is crucial for the sustainability of youth organizations.

U.S. 4-H staff and volunteers are encouraged to participate. The conference fee is Euros 500 (approximately US\$680). The fee includes full board and lodging at the Kange 4H Centre and all transportation during the training program.

Make it Tanzania in August 2010...and include a little extra safari time in your plans.

Detailed seminar information and registration forms are available from Mel Thompson - melvinhi@aol.com or 301 - 493-5301, or from Mrs. Paivi Haapasalo - paivi.haapasalo@4h.fi - of Finnish 4H. ☆



Cleo D. Kottwitz, MO-Brazil 1957, Reflects on IFYE, Career, Life

and His Volunteer Involvement with Heifer International



Remember the Circuit Rider photo (below right) in the Summer 2008 issue of IFYE News? Cleo Kottwitz, MO-Brazil 1957, a retired United Methodist pastor, continues his ministry portraying a Missouri Methodist Circuit Rider from the mid-1800s. He sent the following story in follow-up to the article in the Fall 2009 issue about Heifer International and other programs supporting low income entrepreneurs around the world.

It was June 1957 when Dorothea Drane Dowler and I flew from Missouri to Washington, D.C., for orientation. Dorothea was off to Denmark and I joined John K. Romig, from Ohio, as delegates to Brazil.

An amazing experience! Eleven families in five states and then back to Rio and some time on the beaches of Copacabana. We re-visited our first families and surprised them with our improved Portuguese. They could no longer talk about us! What fun! The adventure continued with some 100 talks the following year.

I remember going to the National IFYE Conference in 1958 at a Lutheran campground in Minnesota. It was there I saw a display on Heifer International - a global nonprofit working to end hunger and poverty and care for the earth

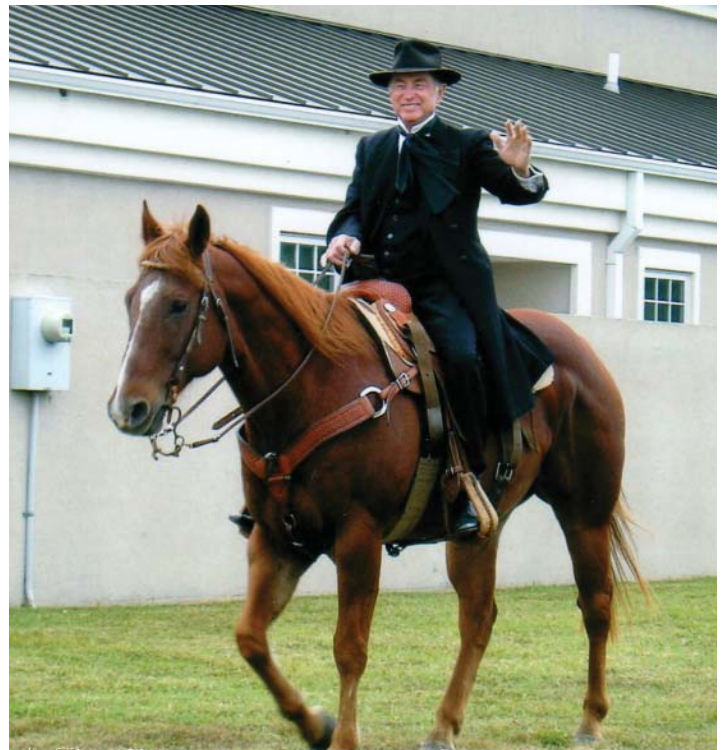
(www.heifer.org). I took their promotional leaflet home with me. That set the stage for years of volunteering with Heifer. This has been one way of continuing the IFYE experience.

Fast forward to 1972. I was now married to Ellen Olmsted with 3 children; I had completed Seminary and was a pastor in a rural parish in north-east Missouri. Heifer Project was in a growth mode in Missouri. I helped select Brown Swiss heifers for a shipment to Central America. I continued volunteering - 1975: delivering a plane load of animals to Honduras in 1975; organizing a statewide Heifer committee in 1984; joined a Heifer Study tour to Honduras and Guatemala in 1986; and served as part-time Heifer staff 1997-2004.

In 1999, Ellen died following liver transplant surgery. After 7 years of struggling with Primary Biliary Cirrhosis, we had high hopes for a new life of good health. Instead, I found myself in deep grief for the next couple of years. In 2003 I married Judy Parsons, a retired educator in the Columbia public schools. Together we have continued to be involved with IFYE and Heifer.

Last November we were part of a Heifer Study Tour to Guatemala. I was pleased to see how Heifer has advanced in the 23 years since I traveled there in 1986. The approach is much more holistic...much more than just animals. Heifer partners with numerous other groups who focus on community development, improved health, and environmental sustainability. For example, a priest in one of the Church partnerships said it this way: Our goals are: 1) food security...no one should go to bed hungry at night; 2) improved nutrition; 3) income to provide for education, medical care, improved housing; and 4) reforestation. Heifer helps with milk, eggs, meat for food security. Heifer helps improve nutrition, not only with animal protein, but especially with manure to enrich the soil so they can grow vegetables and fruits. Heifer helps with income, with sale of eggs, milk, animal offspring. And because of the animal manure to enrich the soil, the farm families can continue to produce from the same land year after year. They do not have to "slash and burn" year after year to have productive land for their crops. They are now able to begin reforestation; and Heifer International and their partners provide seedlings to do it.

I am grateful to the Cooperative Extension Service, 4-H and IFYE for expanding my horizons and introducing me to Heifer International and the many other opportunities I have experienced to learn and grow and serve. ★

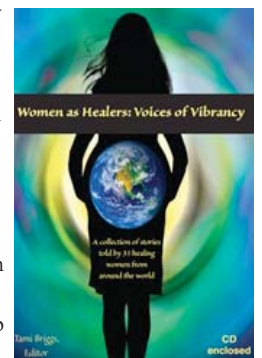
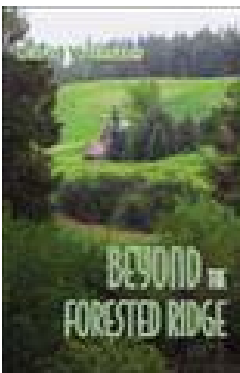


Authors Amongst 4-H International Exchange Alumni

Beyond the Forested Ridge by David Youmans, ID-Colombia 1956. An emeritus academic describes other times in the rural West, educational landmarks, years of work and family life abroad and dynamics of the university milieu.

He concludes with reflections on peace, social justice, spiritual quest and the challenges of aging. This is a sequel to *Wherever Home Is* by Youmans. Both are published by Infinity Publishing. Order online through www.buybooksontheweb.com or call 877 - BUY-BOOK (289-2665).

Women as Healers: Voices of Vibrancy is a "must read" if you are interested in the power and resiliency of the human spirit. It gives hope that healing is always possible. It features 31 women - all gifted healers, from all walks of life, doing extraordinary things to help make our world a better place. It is a powerful read for women and men alike. A CD of Tami's solo harp compositions is included. The author, Tamara "Tami" Briggs, MO-Switzerland 1982, is an accomplished and recognized therapeutic harpist, author, speaker and trainer. Visit www.musicalreflections.com or write Tami at Musical Reflections, PO Box 44744, Eden Prairie, MN 55344, for information on other publications, CD's, and her newest offering - an online six-weeks course, "Healing Harp Meditations." ★



Thomas I. Maast, PA-Finland 1975, Found Love via IFYE in Round-About Way! What a Life and Career It Has Provided with Retirement on the Horizon



Thomas I. Maast, PA-Finland 1975, credits 4-H and his IFYE experience for it all! He writes, "My experience with 4-H - the projects, the books, record keeping, Robert's Rules of Order, the fairs and conferences, all taught me to stand on my own, to work together, to get things done! My father, now 80, was also a 4-H member - strawberries was his favorite project and he still loves them!"

His family hosted Helga Flohrschutz, Germany-Idaho/Pennsylvania 1965, and that added to his desire for the IFYE experience. Somerset County, his home county, had several IFYEs. He shares, "they made a positive impression sharing their experiences, including the "Song of Peace" - the beautiful melody from Finlandia by Sibelius." And then he was assigned to Finland in 1975.

On his return from Finland, he met Halfdan Lie Svalheim, Norway-Missouri/Pennsylvania, the next year, who was hosted in his home county. And that acquaintance resulted in Tom's meeting Halfdan's cousin - Kirsten - who became the love of his life...and his wife in 1979.

They were married in Norway. Halfdan was his best man. Tom and Kirsten settled in the U.S. where he was working with Kraft Foods, and where he expected they would live "happily ever after!" Two years later, Kirsten was offered a teaching position near Oslo, so they decided to "try" (according to Tom) Norway. And they've been there ever since. He is Tom Maast in the U.S.; Thomas Maast in Norway. Both spellings rhyme with "exhaust!" Their home is in Harestua, near Kirsten's school.

After learning Norwegian on their move to Norway, he was employed by 3M, where he has worked for 25+ years. They now look forward to retirement and plan to spend more time on their small farm near Lillehammer and at their "Florida" home in Petritoli in central Italy.

And they hope to visit his parents in Pennsylvania more often. Their family was there last year to celebrate the 80th birthdays for both Mom/Grandma and Dad/Grandpa Maast. And they got to visit Washington before their return to Norway, an experience that brought back memories of Tom's opportunity to represent 4-H in a visit with President Johnson at the White House in 1965.

~ ~ ~ ~

A view from the Maast "Florida" home in Petretoli, Italy. (Upper left)
The family gathering for the 80th birthdays of Mom/Grandma and Dad/Grandpa Maast in Berlin, Pennsylvania (left - Tom and Kirsten at right). ☆



Keith L. Brown, MI-Nigeria 1953 Awarded Michigan Farm Bureau 2009 Distinguished Service Award

Keith L. Brown, MI-Nigeria 1953, was posthumously recognized with the 2009 Distinguished Service to Agriculture (DSA) Award by the Michigan Farm Bureau in December 2009. Keith passed away on April 1, 2009.

The extensive and impressive narrative in the banquet program included the following comments: "Few men have been more deserving, and even fewer have been more respected than the late Keith Brown. Keith was almost universally recognized as a man of wisdom and wide-ranging experience. He was respected as a man of consistent principles and successful practices...his training, experience and common-sense wisdom allowed him to focus attention on agriculture in ways that showcased the richness of nature and its resources, and the dignity of hard work."

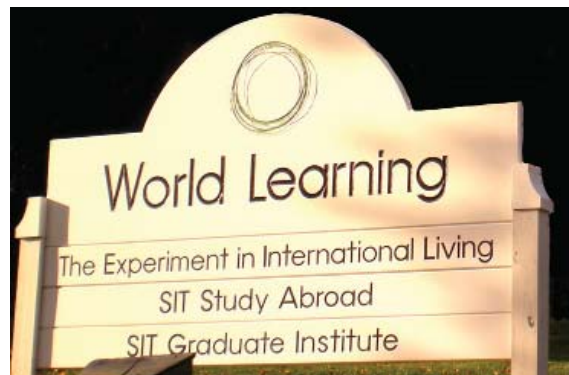
Keith was an active Michigan 4-H'er, an International Farm Youth Exchange (IFYE) delegate during his years at Michigan State University, where he earned a B.S. in animal science and an M.S. in animal nutrition. He was a member of numerous agricultural and community organizations over the years.

His many formal honors included a distinguished service award from MSU in 1981 and Republican of the Year in 2008.

The recognition statement closed with "Keith Brown's life is the epitome of distinguished service to agriculture."

Other recipients of the same recognition include Arne J. Kettunen, long-time State 4-H Leader in Michigan who was involved in the founding of the 4H program in Finland and active in the development of the IFYE program, during which time he accompanied the 1952 IFYE delegation when they sailed for Europe. He received the Farm Bureau recognition in 1956.

Dr. Russell J. Mawby, Michigan-United Kingdom 1948 - Michigan's first IFYE delegate, received the Farm Bureau recognition in 1981. ☆



World Learning The Experiment - SIT Programs

World Learning, a program at work worldwide, provides cross-cultural exchanges, study abroad, and graduate degree programs. See the Summer 2009 issue of IFYE News, with more information and 4-H International alumni involvement. Since then, we have learned of other 4-H alumni who have had a World Learning connection.

Jim Morgan, IA-Switzerland 1975, attended the SIT (School for International Training) graduate school in 1980-81 earning a Master's in International Administration. His SIT internship was with the Swedish 4-H program. He now has his own conference planning business - Let's Meet, Inc.

Harriet M. Smith, MI-Argentina 1964, led an Experiment group to Costa Rica in 1969. She is now with Bridges International in Austin, Texas. ☆



Messages/News - 4-H International Exchange Alumni and Friends

Dear Friends, Thank you for your letter. I still live with my 93+ years. I cannot see much - no writing or reading. Have osteoporosis and balance problems. Living past year in a full-care house. You're everything best. With love and Greetings to all! - **Kirsti Hirvensalo**, 4H International Program Leader, Retired, Ilkantie 19 B 1, 00400 Helsinki, Finland

David and Sue (Kleen) Benedetti (with grandson Milo right), OR-Mexico 1965 and WY-India 1966 respectively, are engrossed in the National 4-H History Preservation Program, which Sue chairs. Dave recently retired after 25 years with AED - the Academy for Educational Development.

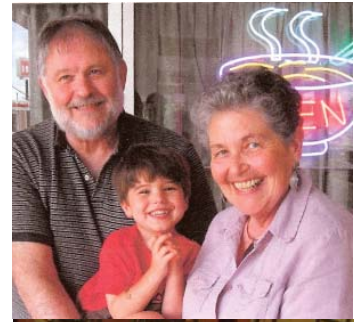
Patricia Busse Cooksey, KS-Korea 1972, teaches World Cultures at Stevenson Middle School in Houston, TX. She will spend June 2010 in China with 13 other Texas teachers on a Fulbright-Hays Seminar.

Prudence (Brown), CT-Costa Rica 1959, husband **Ken Holton**, and a small group of friends visited Costa Rica last summer in celebration of her 50th anniversary as an IFYE. "It was a rare opportunity to visit my families and to be a tourist in the country that means so much to us."

Kathryn "Kathy" Cox Pepple, OH-Botswana 1975-76 on the 4-H International Youth Development Program (YDP), and **Frederick D. Pepple** were married on August 22, 2009 (right). Kathy is the Ohio State 4-H International Programs Leader and Fred is a Common Pleas Court Judge. They live in Wapakoneta, Ohio.

Sheila Calhoun Peterson, MI-Kenya 1967, and her husband, **Leonard Peterson**, went to Alaska in 1970 as teachers. They fell in love with Juneau and remain there. He is a commercial fisherman and education consultant; she a legislative aide to an Alaska State Representative. Sheila is a new member and serves as secretary of the IFYE Association board of directors.

John W. Shamburg, NE-Peru 1962, a dedicated National and World IFYE Conference attendee, has been ill for some time. He recently fell and is now confined to the Good Shepard Nursing Home at 2242 Wright Street, Blair, NE 68008. A card or note will mean a lot. ★



Recognized Artist Duain W. Vierow, MN-Netherlands 1957 Invited to Attend Chinese Lutheran Church Convention in Malaysia

Dr. Duain W. Vierow, MN-Netherlands 1957, was featured in the Fall 2006 issue of IFYE News. It was a story of his career as a missionary in Southeast Asia between 1960 and 1980 and as a pastor with Lutheran congregations in Minnesota until his retirement in 1993, when he and his wife, Donna, moved to Florida.

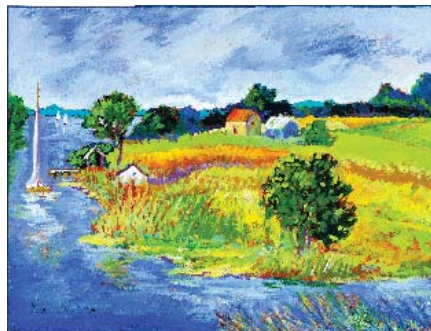
His interest in art was always there. It became a passion in retirement. Parkinson's Disease in more recent years has given him serious medical challenges, including deep brain surgery. However, you can't keep a good man down!

He continues to paint despite the challenges. Two of his paintings, "End of Summer" and "From Death on the Cross," are shown below. They are on display in Malaysia and Singapore. He also has other paintings hanging in institutions in those countries, as well as in India. Two of his paintings now hang in the new chapel in Kuala Lumpur.

Last September, he was invited along with other missionaries who have served in that area of the world, to attend the 30th Convention of the Chinese Lutheran Church of Malaysia and Singapore, and dedication of the new Lutheran Centre in Petaling Jaya (near Kuala Lumpur), Malaysia.

"Donna and I were overwhelmed with the hospitality of our hosts. There was sadness. I expect it will be my last trip to Malaysia. I had to say goodbye to many people I will likely not see again in this life. I am on the move, with the Master," wrote Duain.

Visit www.dvierow.com and/or google "Duain Vierow" for references to websites and documents that give emphasis to his many accomplishments as a missionary and artist. ★





National IFYE Conference - Charleston, WV - August 3-7

Conference Information on Front Cover - Page 1

Conference Tours



Conference Program Tours: The conference program includes six full-day and half-day tours on Thursday, August 5. These tours, including lunch, are included in the conference fee. Choose one. Indicate your choice on your registration form!

Full-day Tours - Thursday, August 5

Tour A – Along the Ohio River

Travel north to the mid-Ohio Valley region where you will tour the 100 year-old Fenton Art Glass Company. Fenton is the largest manufacturer of handmade colored glass in the United States. The factory guided tour offers an up-close and personal look at the action where skilled glassworkers use the tools and techniques of centuries ago to create beautiful art glass right before your eyes! Pause in the Gift Shop to admire the hundreds of beautiful creations. Then journey on to Blennerhassett Island Historical State Park where the tour will start with a sternwheeler ride on the Ohio River to Blennerhassett Island. While on the island tour the magnificently reconstructed Blennerhassett Mansion, go on a nature walk, and shop at the Friends of Blennerhassett Gift Shop. Lunch is included.

Tour B – Craftsmanship & Coal Tour

Travel south to Beckley to Tamarack, the Best of West Virginia, the showcase and marketplace for our rich cultural heritage of artisan skills and traditions. Browse through the thousands of displays, eat gourmet foods, and take home a hand-crafted WV memento. Then on to the Exhibition Coal Mine tour that takes visitors below ground, under the supervision of an experienced veteran coal miner. Traveling 1500 feet beneath the hillsides of New River Park, visitors are carried along track, riding authentic “man cars” from the mine entrance, to old working areas of the coal mine and back. Stops throughout the tour explore the history of low-seam coal mining from the hand-loading days into the era of modern mechanization. Visitors can explore the historical coal camp situated throughout the grounds, the Coal Company House, Superintendent’s Home, Pemberton Coal Camp Church, and the Helen Coal Camp School. Lunch is included.

Tour C – West Virginia Art & Farm Village Tour

At the Huntington Museum of Art enjoy the beauty of glass, particularly that from the Ohio Valley; the wisdom and whimsy of Appalachian folk art; the functional artistry of American furniture and firearms; the serenity of 19th and 20th century American and European paintings; and the intricacy of Islamic prayer rugs. Then travel to Heritage Farm Museum and Village where you can stroll through up to 16 different buildings experiencing life as it was “back then” and learning about the major inventions that changed everything to create the quality of life we take for granted today. Lunch is included.

Tour D – Along the Midland Trail – US Route 60

Travel along U.S. Route 60 to Cabin Creek Quilts, which is still producing—by hand—quilts and patchwork accessories from their homes in a brighter, bolder look. Then comes a short stop at Kanawha Falls. Next is one of West Virginia’s most scenic vistas, Hawks Nest State Park high above the New River. A jetboat conquers the currents up the New River as you see from beneath the world’s second longest single arch steel bridge high on the canyon rim. Then you will travel to view this spectacular New River Gorge Bridge from the Visitor Center overlook. Lunch is included.

Half-Day Conference Tours - Thursday morning, August 5 - Both tours include and end with lunch.

Tour E - West Virginia History

This tour will begin at the splendid West Virginia State Capitol which overlooks the Kanawha River. A guide will tell about this Cass Gilbert designed 1932 limestone and marble Italian Renaissance style building with the blue and gold-leaf gilded dome. If the Governor is receiving, we will tour the brick Georgian Revival Governor’s Mansion on the west side of the Capitol Complex. Then it will be on to the impressive West Virginia State Museum at the West Virginia Cultural Center. There you will trace the development of West Virginia from the prehistoric formation of coal through the early pioneer settlements to the modern industrial state. This is a splendid, newly-renovated interactive tour through time is a must-see for every Charleston visitor.

Tour F - Clay Center

The new 240,000-square-foot Clay Center for the Arts & Sciences houses performing arts, visual arts and the sciences under one roof. Visit two floors of interactive science exhibits and the gaze at the art gallery featuring selections from the Museum’s Permanent Collections and traveling exhibitions. The ElectricSky™ Theater presents planetarium shows and large format films on its giant domed screen - a truly cultural experience right at your door step.

Post Conference Tours - Saturday, August 7, Following Closing Events

West Virginia is offering attendees the chance to explore more of West Virginia through three Post-Conference Tours that will take place on Saturday, August 7. Each tour includes lunch. There is a fee for Post-Conference Tours in addition to the regular conference costs.

Tour 1 - The Past and Present Tour

The Past and Present Tour will leave from the Embassy Suites Hotel by charter bus to visit The Bunker at the world famous Greenbrier Hotel. Construction on this once top-secret hide-away for U. S. government officials began in 1958. The 112,544-square-foot bunker was built 720 feet into the hillside under The Greenbrier’s West Virginia Wing. Once complete in 1961, the facility was maintained in a constant state of readiness by a small group of government employees. While at the Greenbrier, lunch will take place at Tree Top Café. After visiting the old bunker then you will visit the New River Gorge National River which is a unit of the United States National Park Service designed to protect and maintain this scenic river in southern West Virginia. Established in 1978, the NPS-protected area stretches for 53 miles (85 km) from just downstream of Hinton to Hawks Nest State Park near Ansted. You will conclude the tour with a stop at Tamarack, West Virginia’s premier artisan shopping experience featuring artists, craftspeople, performers and specialty food producers of West Virginia. The Past and Present Tour will return to the Embassy Suites. Cost \$95.00

Tour 2 - The All-Aboard Tour

The All-Aboard Tour will leave from Embassy Suite by charter bus to Cass Scenic Railroad State Park. Nestled in the mountains of West Virginia, Cass Scenic Railroad State Park offers excursions that transport you back in time to relive an era when steam-driven locomotives were an essential part of everyday life. Your ride behind the old Shay engine will be filled with rich history of the past, unparalleled views of a vast wilderness area, and close-up encounters with the sights and sounds of original steam-driven locomotives. The town of Cass remains relatively unchanged. The restored company houses now rent as vacation cottages and add to the charm and atmosphere of the town which includes the company store, museum, and train depot. Lunch will be provided. The return trip to the Embassy Suites will include the WV Scenic Highway. Cost \$80.00

Tour 3 - The Wet and Wild Tour

The Wet and Wild Tour will leave from Embassy Suites by charter bus to the New River Gorge National River. The upper New River white water rafting trip takes you through exceptionally scenic canyons on relatively calm water with a few easy rapids and plenty of places for playing or just hanging out. Lunch will take place along the Upper Rafting Section. Rafting the Lower Section from Thurmond to Fayette Station in the picturesque New River Gorge, is one of the most popular white water rafting trips in the country. After battling the New River Gorge, the charter bus will take you back to the Embassy Suites. Cost \$140.00

IFYE Association of the USA Memberships

The following 4-H exchange alumni, spouses and friends paid annual membership dues for 2009. Year indicates alumni year of participation.

Martha Jo Leisure Adams 1960	Miriam Bouic Engle 1951	Sharon Cubitt Heck, Friend	Joan M. Kuhne, Friend	Mabel Ann Davis Sherrill 1958
Debra Boston Albert 1980	Karen DeGood Engle 1966	Fred J. Henningsen 1955	Gail Shaffner Kuntz 1979	Laura A. Schick 1999
Joann Chalmers Amend 1965	Kenneth A. Farner 1954	Donna Powell Hershberger 1974	Robert Latta, Friend	Grace Mitchell Shiffer 1964
Warren Ames 1980	Franklin A. Fender 1962	Sarah Hileman 2003	Eloise Cooksey Layman 1953	Betty Ann Moore Sides 1954
Robert P. Armour 1966	Lawrence A. Fenske, 1955	Guy A. Hummon II 1954	Amanda Tumm Lee 1966	Carol Pehl Sparks 1977
Jefferson P. Arnold 1961	Gery J. Fisher 1970	Terry H. Jaspers 1977	Harry P. Light 1952	Jess M. Stairs 1964
R. Wayne Bath 1951	Susanne G. Fisher, Friend	Carolyn Vandiver Jenkins 1953	Sherry Lynch Conrad 1977	Dale L. Stanberry 1963
Dick A. Becker 1953	Prudence Sturtevant Flood 1972	Jacqueline Duhigg Jenkusky 1982	Lonnie and Molly Malkus, Friends	Wanda Brewer Stephens 1953
Cathy Borstel Behm 1971	Roger W. Fox 1959	Maurice E. Johnson 1954	Jerry L. Mark 1969	Jean L. Stewart 1962
Dale Bell 1958	Douglas A. Fuerst 1987	Allan S. Johnson 1958	Fred S. Matley 1954	Mary Jo Cunningham Stewart 1960
Max E. Benne 1957	Barbara C. Funkhouser 1952	Bart L. Johnson 1987	Jack L. Morse 1963	James Stewart, Spouse
Francie Brink Berg 1954	Ann Foley Gardner 1969	James F. Johnson 1958	Margaret Reed Mukherjee 1956	Gwen H. Stickney 1989
David B. Bills 1964	Jay J. Garrett 1958	Diana Duncan Juan 1963	Dorothy Mae McLean Naugle 1954	Carol Henriksen Stillman 1969
Betty Ann Blanton 1984	Gary W. Gerhard, Friend	Elaine Methaney Kangus 1995	Alton N. Nelson 1949	Ramona Miller Stout 1971
Dean A. Bloch 1984	Bonnie Everling Glass 1953	Matthew S. Kaplan, Friend	Freida Nelson, Spouse	Kathleen Fojtik Stroud 1969
Lee Ann Leet Blum 1955	Kay Binney Green 1968	Bruce I. Keeney 1957	Suzanne Schriefer Neufang 1986	Dorothy Mae Blaser Struebing
Karen Fleck Bonnet 1971	Madeline Greene-Wojciechowski	Alisa Forrester Kigar 1989	Erna Wagner O'brien 1973	1954
Marc C. Bordsen 1964	1984	Betsy M. Knox, Friend	Virginia Falter Olson 1956	Jean Penrose Sundborg 1961
Myrtle Flaskerud Bosch 1957	Allison Earley Grove 1993	Dobbsie Witherow Koeman 1986	Corinne Snook Paulhamus 1882	John I. Tanner 1956
Herbert Brown 1952	Allison Saylor Guthrie 1953	Cleo D. Kottwitz 1957	Eleanor R. Pearce 1953	Ken Taylor 2008
Rose Brown	Kim Barrrell Gutowski 1989	Tima Sue Heusner Krausse 1969	Darlene Twing Perrigo 1955	Nathan T. Teegarden 1982
Jonna Alig Burck 1986	Willidea Allen Hansen 1985	Robert F. Kuest 1967	Sheila Huskamp Peterson 1966	Thomas L. Thorburn 1963
Keith D. Burt 1951			Trudy Calhoun Peterson 1967	Antoinette M. Tosco 1966
Charles D. Carlson 1959			Ronald D. Petrak 1953	Frank O. Tremea 1959
Elizabeth Carlson, Spouse			Ruth Anne Petrak, Spouse	Julie A. Tritz, Friend
Donald F. Clark 1952			Katherine Phau 2002	Thomas Trout 1970
Joni Rae Fugle Collins 1985			Aline Nelson Phillips	Claire Allesio Velyvis 1957
Paul M. Corwith 1954			Alganesh Tedla Piechocinski 1971	Roger C. Wahls 1967
Donald C. Culp 1957			Aaron Pruitt 1992	Ashley C. Watson 2008
Cathleen Feige Cummings 1968			Naomi Redman, Friend	Edward M. Watson 1963
Retha Hankey Davis 1971			Eugene D. Richard 1964	Sharon Drake Werner 1970
Deanna Jean Ellis DeLong 1965			Mary E. Richard, Spouse	Susan Wheelhouse Werth 1969
Mary Christensen Denny 1958			Paula E. Riddle 1989	Geraldine Bassett West 1971
Marilyn Holman Depasquale 1953			John A. Ries, Jr. 1962	Janet Adkinson Weston 1958
Clifford G. Doke 1955			Margaret Ries, Spouse	Anita Johnson Whisney 1973
Patricia Eisenmann Donahue 1971			Frederick E. Roberts 1965	M. Brooks Whitney 1962
Susan Twitchell Donaldson 1956			C. Albert Sabin 1969	Franklin C. Wilson 1951
Mary Duewer Dougherty 1988			John W. Sadler 1960	Nichole Decheemaeker Winkler
Stephen Dovey			Donna Lindsay Schrantz 1976	2005
Ruth Benson Drummond 1953			Judith Lukins Schrock 1968	Jeff Winkler, Spouse
Marjorie Hawes Dunlap 1960			Donald F. Schwartz 1958	Shirley Werner Witmer 1959
Dennis E. Elgrim 1957			Wayne W. Sharp 1964	Margaret Allen Wolf 1961
Marilyn Nickel Engle 1958			Violet Klobas Shepard 1957	Connie Zuehlke Wright 1975
Paul Engle, Spouse			Robert F. Shepard 1959	Larry L. Wright 1965 ☆

Life Memberships

The Winter 2007 issue of IFYE News featured a list Association life members at that time. Subsequent issues have named new members. The following have become life members since the last issue, or were not included in previous listings. There are now 1,185 life members.

Adelma L. Visser, KS-Poland 1977, L-0006R
James L. Schmidt, IL-Jamaica 1974, L-0008R
Kathleen L. Wedemeyer, IA-Philippines 1973, L-0433R
Michelle Thomas Houts, OH-Denmark 1998, L-1173
Marie I. Shaw, IL-Sweden 1983, L-1174
Jeffrey D. Layman, OH-Soviet Union, L-1175
Jean Willard Barton, CA-New Zealand 1951, L-1176
William R. Doster, OH-Portugal 1957, L-1177
Trudy Huskamp Peterson, IA-Finland 1988, L-1178
Gary M. Peterson, Spouse, L-1179
Bonita Perks Edwards, NE-UK 1978, L-1180
Denise Watson Tolmie, CA-UK 1986, L-1181
J. Jay Fisher, ND-New Zealand 1977, L-1182 ☆

A Nickel Here, A Penny There.... Where does My Money Go?

Communication with IFYE alumni is often centered on money when you are the treasurer of the organization. Two re-occurring questions alumni ask are: Why should I pay dues? And where does my money go? Let me try to answer both questions.

Last year \$10,838 was expended for 2009 activities. (More might have been spent during the year but those funds paid prior year expenses.) The newsletter you are now reading took 74.3% of the money spent in 2009. Another 21.5% was used by the board for administrative expenses. Board administration included postage, board conference calls, committee conference calls, conference expenses, and the contact project. 3.2% went for correction of life membership situations that occurred. One percent was spent on the IFYE Shoppe.

For those who may not be aware, the board is attempting to locate all IFYE and other alumni on our database roster. Approximately 900 are still "missing." Additionally, 2,815 are not life members or annual dues payers. The \$638 spent in contacting persons last year updated the database and helped generate an additional \$1,750 in revenue.

So why pay dues? Very bluntly, to assist the Association in retaining the exchange program we cherish for others to have the opportunity to participate. Please see the President's message for insight into activities the board is undertaking.

Based upon 2009 expenses, your \$25.00 would support the newsletter (\$18.57); board administration (\$5.38); Life member corrections (\$0.80) and IFYE Shoppe (\$0.25).

For your information the following is the planned budget for 2010.

INCOME	
Dues	\$ 5,306
Donations received	\$ 1,500
Earnings from Life memberships	\$8,600
Foundation newsletter page	\$ 900
IFYE Shoppe profit	\$ 100
Bank interest	\$ 70
TOTAL INCOME	\$ 17,176
EXPENSES	
Newsletter(3)	\$ 8,500
Conference seed money increase	\$ 3,000
Board administration	\$ 1,500
Accounting, licenses, audit	\$ 800
Board liability insurance	\$ 835
Conference calls	\$ 750
IFYE conference	\$ 750
Webmaster	\$ 500
IFYE Shoppe insurance	\$ 50
Miscellaneous	\$ 500
TOTAL EXPENSES	\$ 17,160

Should you have questions as to the financial objectives and the use of your funds, feel free to contact me.

Art Deisher, IFYE Association Treasurer ☆

IFYE Foundation of the USA

Insurance - Have Enough?

This may seem a strange topic for me to write to you - the supporters of the IFYE Foundation and 4-H International exchange programs. However, insurance can cover a wide spectrum and some say you can be "insurance-broke."

We all endeavor to have all the insurance we need to protect us against an event we hope never happens; medical, life, automobile, home-owners and special ones that we are told will protect us. This expense is non-reimbursable, except when we have a claim. So what does this have to do with the IFYE Foundation and its supporters?

In today's world, we are all subject to liability claims and so we have liability insurance. The IFYE Association and the IFYE Foundation Boards have had liability coverage for the past several years, but not until recently did we learn that our insurance wouldn't cover us if there was a claim involving a 4-H exchange. So how did this happen? Once the insurance company learned what activities we were involved in, they determined we were a risk if a participant would have a problem and file a claim. So, now to find an insurance company that can provide liability coverage we can afford. Coverage we hope we never need. It pays to read the fine print.

Spring is upon us and soon we will be receiving grant requests to support 2010 exchanges. Your continued contributions are going to make it possible to support exchanges at about the same level as last year. The Foundation never knows who or how many requests we will get and that makes it a challenge.

The Foundation Board again thanks all contributors - previous and those who may have given for the first time. We appreciate your efforts so that we can provide financial support to 4-H participants that send thank you notes telling us how much they appreciate your support. "It was the best experience of my life," is in the many notes received. They are thanking you too!

This and every issue of the IFYE News provides you the opportunity to clip the coupon below and mail in your contribution. ★

Foundation Contributions

I - IFYE Patron (\$1,000+)

Betty L. Stephenson

F - Foundation Fellow (\$500+)

Eldon R. "Bud" & Virginia E. Aupperle
Wilfred Groves
Walter & Nancy Schmidt
Steve Schomberg
Mildred C. Weidemann
David A. & Joan E. Wieckert

Y - Youth Sponsor (\$250+)

Chuck & Barb Havlicek
Jim & Henrietta Hensler
Joel & Ann Hertz
Jean Hoshiko
Linda J. Kroupa
Keith R. Olsen
Kim Reaman
Wanda Brewer Stephens

E - Excited Member (\$100+)

Margery A. Bayless
Joy Swan Bickford
Hope Bittner
Terrie Davis Bodey
Ray & Verena Borton
Pat & Diane Corcoran
Mary Crave
Duane C. Davidson
Linda Donavon
Joyce Drewiecki
Stan Dreyer
Diane Dudley
Nancy Dwoyer
William & Jane Edwards
Louis & Joan Eyerman
Eleanor Foreman Goff
Dave & Debra Grimm
Carlos & Alice Lemar Hamilton
George W. Haynes
Mary Heisler
Ann Ruby Hemken
Alice E. Hevner
Roy E. Hranicky

Excited Member (Continued)

Tina Krause
Mary Beth Lang
Lillian Larwood
Marjorie Loyd
Marina Lvovsky
Michael E. Madden
Nancy A. Maxwell-Rich
Nelson McCall
Glenn & Reba McClean
Paul H. Miller
Robert H. Miller
Susan & Ed Morris
Naomi "Penny" Mouis
Mary Lue Mueller
David & Julie Nass
Ralph E. & Joyce K. Neill
Esther M. Nichols
Helen Obemagel
Mary E. Ottmar
Howard F. Parks
Virgil & Estelle Rayton
Tracy Remy
Chuck Rhein
Rollin R. & Julianne L Shoemaker
Barbara Spangler
James P. Tobin
Tom & JoAnn Trail
Lucia C. Vasquez
Robert L. Walker
Hubert Wetzel
Brooks Whitney
Dale & Crystal Vonker

Supporter (Up to \$100)

Don Anderson
Barb Bierman Batie
Stacey Baumgarn
Albert & Barbara J. Bishop
William H. Bohl
Phyllis M. Brown
Eleanor F. Burkman
Donald F. Clark
Maureen L. Cook
Donald Culp
Mr. & Mrs. Karl E. Faidley
Frank A. Fender
Janet Figg
Betty Jo Foster
Cynthia Foster
Anne Fournier
Patricia M. Fox
Alison S. Guthrie
Carol H. Hagen
Linda & Henry Haynes
Carol Hendrickson
John Hibbard
Sarah Hileman
Robert Horton
Betty Brettell Johnson
Maurice E. Johnson
Elizabeth Kleckner
Kip Larsen
Rainy Linn
Shawna Magtutu
Jerry Mark
Deb Marple
Dale Miksch
Sid Montague
Jeffrey R. Moser
Suzanne & Rolf Neufang
Ruby Nock
Ema K. O'Brien
Ellen Paine
Gordon Patty
Doris Rembold
John Ex Rodgers
Ray E. Ropp

(Continued on page 11)

CONTRIBUTION TO THE IFYE FOUNDATION OF THE USA

Name: _____

FIRST MI LAST

Address: _____

City: _____ State: _____ ZIP: _____

E-mail: _____ Amount enclosed: \$ _____

____ Use as Needed for 4-H International Programs

____ In Honor* of _____

____ In Memory* of _____

____ Other: Please specify: _____

*Acknowledgement (omitting amount) should be sent to: _____

Address, ZIP: _____



Make checks payable to IFYE Foundation of the USA, Inc.

Mail to: IFYE Foundation, 29470 Saxon Road, Toulon, IL 61483

(Contributions are Tax Deductible to the Extent Provided by Law)

The IFYE Foundation is an IRS approved 501(3)(c) non-profit charitable organization.

Foundation Contributions

Supporter (Continued from page 10)

Laura Schick
 Allaire Schlicher- Beutner
 Alice & Steve Sedgwick
 William Selm
 Earl H. Sonnemaker
 Phyllis Torrey
 Doreen VanSickle
 Arlene J. Vincent
 Deryl E. Waldren
 Margie N. Weimar
 Larry D. Williams
 Elaine Simon Wolff
 F. Edward Wuerker
 Lois H. Zumbunnen

Anniversary Fund

(Participation Anniversary Year)

Alice & Steve Sedgwick (46)
 Laura Schick (11)

Contributions In Honor Of

Beatrice J. Cleveland
 Eldon R. "Bud" & Virginia E. Aupperle
 Patrick & Diane Corcoran
 Frank A. Fender
 Carlos & Alice Lemar Hamilton

IFYE Program

David & Julie Nass

IFYE Foundation Board

Mildred C. Weidemann

Scotland Hosts 1952

Sid Montague

Melvin J. Thompson

Maurice E. Johnson

Marina Lvovsky

Robert H. Miller

Mary Wengryn

Maurice E. Johnson

Hugh Wetzel

Elaine Simon Wolff

Lifetime IFYE Experience

Chuck Rhein

Contributions In Memory of

Norma Hanell Ashbrook

Eldon R. "Bud" & Virginia E. Aupperle

Ray E. Ropp

David A. & Joan E. Wieckert

Barbara A. Bean

John Hibbard

Ellen Paine

Donald W. M. Burkman

Eleanor F. Burkman

Robert F. Ernst

Robert H. Miller

Pauline Rogers Greene

Phyllis M. Brown

Inez Halverson

Virgil & Estelle Rayton

Daryl Hemken

Ann Ruby Hemken

Paul Hoshiko Jr.

Jean Hoshiko

Nancy Maxfield

Phyllis Torrey

Les Nichols

Esther M. Nichols

"Pop" Nichols

Betty Brettell Johnson

Mary and Reg Pettitt

David & Julie Nass

Ruth Carson Proctor

Joy Bickford

Alice E. Hevner

Susan & Ed Morris

Patricia Redhage Reed

Eldon R. "Bud" & Virginia E. Aupperle

Romona Schiefelbein

Naomi "Penny" Mouis

Glenn H. Shoemaker

Rollin R. & Julianne I. Shoemaker

Pamela Samuelson Waugh

Maureen L. Cook ☆

ASSN. MEMBERSHIP, CONTRIBUTIONS & ADDRESS UPDATES

Name: _____ New Address/Information?

FIRST MI LAST

Maiden Name: _____ Spouse: _____

Address: _____

City: _____ State: _____ ZIP: _____ Phone: _____

Program: _____ State Represented: _____ Host Country: _____ Year: _____

Extension Staff: _____ Host Family: _____ Friend of IFYE: _____ Other: _____

E-mail: _____

Prefer mailings via: E-mail _____ Postal _____ Both _____ Remove from mailing list? _____

Annual Membership Dues @ \$25 single/\$40 married couple (calendar year) \$ _____

Life Membership @ \$300 single/\$400 married couple \$ _____

Contributions to IFYE Association General Operational Support *
 (Contributions are Tax Deductible to the Extent Provided by Law*) \$ _____

Total Amount Enclosed..... Thank You! \$ _____

*The IFYE Association is an IRS approved 501(3)(c) non-profit charitable organization.



Please make checks payable to IFYE Association of the USA

3912 County Road 130
 Bellefontaine, OH 43311-9359

2009 IFYE Association Awards

Nominations Due April 15

IFYE Association Recognition Award nominations for 2010 are due April 15.

Recipients will be announced at the International Banquet during the annual conference in West Virginia in August.

There are four categories of awards:

* Friend of 4-H International

* Commendation for Contributions to International Understanding

* Meritorious Service to 4-H International Programs by Extension personnel

* Outstanding Contributions by 4-H International Alumni to 4-H International Programs

Information/nomination forms available on the website - www.ifyeusa.org

2012 National IFYE Conference Bids

Due April 15, 2010

Information and Application Forms available in the

Policies and Procedures Manual

www.ifyeusa.org

4-H International IFYE Shoppe

For information on items available, visit the website - www.ifyeusa.org

or contact Beverly Laesch Hornickel, IL-Panama 1970

104 Cornell Drive

Normal, IL 61761-1919

309-862-0007

bev_hornickel@msn.com

Association Dues Are Due

Become an Association member today!

Dues paying members receive all newsletters and mailings.

Exchange Participants attending the National IFYE Conference must have paid dues or do so on arrival.

Use the form above and become an annual or life member.

If already a life member - consider a contribution for general operational support!

In Memoriam

The IFYE Association has recently received word of the death of the following 4-H International alumni, spouses, staff, family members, and Association friends, members, and supporters (L-Life Membership):

★ **Betsey C. Dodge**, NH-Ireland/N Ireland 1961, November 19, 2009, New Boston, NH. One of her hosts, Helen Hadden Masterson, wrote "I shall miss the letters with the paper cuttings. We were fortunate to have Betsey in Ireland for her 60th birthday."

★ **Isabel Bengert Fouts**, MT-Germany 1955, and her husband, **Walter H. Fouts**, died within three hours of each other, September 7, 2008, Turner, MT

★ **John Dale Grubb**, WA-Pakistan 1958, L-0621, April 7, 2009, Wenatchee, WA

★ **Anita F. Henningsen**, wife of Fred J Henningsen, MI-Germany 1955, February 7, 2010, Sturgis, MI. Fred's first wife, **Doris Kowalk Henningsen**, MI-India 1955, died September 29, 1979

★ **William H. Holdford**, husband of North Carolina's Secretary of State Elaine Folk Marshall, MD-Brazil 1967, November 28, 2009, Raleigh, NC

★ **William Steve Lilly**, TX-Turkey 1951, May 14, 1998, Nacogdoches, TX

★ **Floyd Brooks Many**, husband of Ruth Rose Many, NY-Norway 1949, Hobart, NY

★ **Betty T. Molloy**, long time 4-H International Programs staff member, National 4-H Council, February 10, 2010, Wheaton, MD

★ **Raziq Qazi**, husband of Lorna Paine Qazi, CO-Germany 1953, June 19, 2009, Northglenn, CO

★ **Norman L. Virden**, IL-Chile 1959, July 4, 2009, Vandalia, IL

★ **Hugh Franklin Waters**, AR-Lebanon/Syria 1952, April 16, 2002, Springdale, AR

Deceasements, corrections and updates are appreciated. Please send full name, State-Country-Year or relationship to program, date of death and address, copy of obituary or contact person. We must verify information before listing. E-mail to melvinhi@aol.com or mail to IFYE Association, 5811 Lone Oak Drive East, Bethesda, MD 20814. ★



International Four-H Youth Exchange
Association of the USA
5811 Lone Oak Drive East
Bethesda, MD 20814-1843

Non-Profit Org.
U.S. Postage
PAID
Champaign, IL
Permit No. 453

ADDRESS SERVICE REQUESTED

VISIT US AT:
WWW.IFYEUSA.ORG



Moving? New 911 Address?

Send mailing label corrections to the IFYE
News return address above or melvinhi@aol.com



1963 IFYE Delegates to Turkey - Reunite in Arizona

Gün aydın! It was 47 years ago that "bir, iki, üç, dört, beş" - all "five" 1963 IFYE delegates to Turkey were preparing for that unique exchange experience! They, with their spouses, held their first reunion in February, 2010, in Cottonwood, Arizona, hosted by Betty and Ron Walch. They reminisced, viewed those famous memorable slides, laughed when Vera Mae told of being questioned by airport security because of the slide projector she was toting - they were popular in those days!), practiced their Turkish, discussed current events, and toured Red Rock Country and the Sedona environs.

The group includes (l-r) Vera Mae (Ernst of Maryland) and Art Schultz, of Germantown, Maryland; Crystal and Dale (Colorado) Yonker, O'Fallon, Illinois; Jack and Linda (Holliday, Montana) Labrie, La Canada, California; Irene and Jim (Illinois) Munton, Henderson, Nevada; and Betty (Easter, Missouri) and Ron Walch, Cottonwood, Arizona. Allaha is marladık! ★