



IFYE NEWS

An Official Publication
of the
IFYE Association of the USA, Inc.

Spring/Summer
2022 Issue

Established as International Farm Youth Exchange™ in 1948

Published April 20, 2022

2022 IFYE Participants Gearing Up for Summer and Fall Program



Alan Lambert
National IFYE Program
Director
alanelambert@ifyeusa.org

The long-awaited 2022 IFYE program is coming together at a phenomenal pace in the past few weeks. The continued uncertainty of host country participation and participant numbers have postponed much of the placement activity for the first quarter of this year. We will be placing 17 IFYE representatives in 12 of our participating countries for two-, three- or six-month IFYE programs.

Though we have had over 30 IFYE applicants since last fall, a number of those interviewed and approved IFYEs have withdrawn due to job offers, internships, school commitments, and the continued COVID and geo-political concerns. Several of those that have withdrawn have indicated their desire to participate in the 2023 IFYE program. More detailed information on the 2022 IFYEs can be found below.

International Leadership Programs linking with IFYE Program - As you may recall, the IFYE Association received a grant from the United Soybean Board for an international leadership program as part of the overall IFYE host family experience. Four individuals will be hosted in Germany and take part in soybean related activities and education with the USDA Foreign Ag Service (FAS) and United States Soybean Export Council (USSEC) as part of their IFYE program.

IFYE has also received a substantial grant from the United Sorghum Checkoff Program for one IFYE to participate in a

Sanders Barbee
(Kansas)
United Sorghum
Checkoff Program
(USCP)



Current Status/future goals

Ag Econ major, Pre-law specialty

Ag-related experience

- Sustainability project with National Sorghum Producer
- Kansas Grain Sorghum Fellow
- [Feed the Future USAID](#) lab - communications assistant
- Baker Wetlands volunteer educational specialist

Interests

- Career in international agriculture development and research to focus on sustainability and conservation.
- Ag Policy for a means of change.

similar leadership program to Morocco.

An IFYE representative from Illinois is receiving financial support from Compeer Financial, a regional financial institution in NW Illinois, SE Minnesota and SW Wisconsin. Compeer is also providing a financial contribution to the IFYE Association.

Several other outbound IFYEs are receiving funding from their respective state groups/associations.

Inbound IFYEs - I have not received all the country information on the number of inbound IFYEs to the US, but I expect that we will receive 12-15 delegates from 7-8 countries. States that are interested in hosting include: Alaska, Colorado, Illinois, Iowa, Kansas, Minnesota, Missouri, Nebraska, North Dakota, Ohio, South Dakota, Texas, Virginia and Washington.

Orientation for both the inbound and outbound IFYEs will be held in Washington, D.C. from June 16-20, 2022. IFYEs will then travel to their host states and host countries.

Help Needed for Presentations upon Return to U.S. - Each of the U.S. IFYEs are required to meet a presentation requirement of 25 points within one year of their return. Your help in assisting these returning IFYEs to share their experiences with a vast audience will be invaluable. You will find the home state of each of these 2022 IFYEs in the accompanying information, so please help me assist them in meeting those requirements.

Activities may include a variety of social media posts, blogging, vlogging, bulletin boards, news articles, public speaking presentations, recruiting new outbound participants and host families, helping with IFYE orientation and debriefing, hosting inbound IFYE delegates and more.

2022 USA Program Participants

Host Country
Morocco - (S)



Continued on Pages 4-7



International Farm Youth Exchange™

If you have been on the IFYEUSA.org website in recent months, perhaps you may have noticed the use of “Established as International Farm Youth Exchange™ in 1948” on our home page.

*Jan Dennis Wood,
President
IFYE Association of the
USA, Inc.
jwood@ifyeusa.org*

In November 2007, IFYE was granted Registered Trademark protection from the US Patent and Trademark Office (USPTO) for the word IFYE in the logo globe. Over the years, there has been much discussion by numerous IFYE

Association Boards of Directors about further trademarking International Farm Youth Exchange.

Historically, International Farm Youth Exchange was trademarked in 1955 by the National 4-H Foundation of America, Inc. After IFYE separated from 4-H, the trademark was not renewed. After a time, it was classified as a “dead” trademark, meaning no one claimed it.

This year, thanks to the generosity of our IFYE Family donors, our Marketing Committee recommended using some of the extra Annual Giving Campaign (AGC) funds to explore the trademarking of International Farm Youth Exchange. Two years ago, I enrolled in an eight-week course sponsored by the USPTO titled “Trademark Boot Camp.” I quickly discovered the complexities of filing for a trademark. So, when the Marketing Committee

recommended considering a filing for International Farm Youth Exchange, the Board engaged an Atlanta, GA firm, Hall Booth Smith, to help us with pursuing the filing for trademark protection of International Farm Youth Exchange. This firm was recommended by an IFYE alum.

In recent weeks, our attorney filed two actions for the IFYE Association of the USA, Inc. The first was a filing to protect the word “IFYE” without being in the logo. This is called a Standard Character Mark. The second filing is for the registered trademark protection of the words “International Farm Youth Exchange.” Because of COVID, the USPTO will take up to six months to assign one of their attorneys to review our filings. We do not expect to hear anything from the USPTO until September or October.

Why should IFYE take this action? There are several reasons the Board has taken this action at this time. Over the past few years, we have constantly needed to explain our history as International Farm Youth Exchange™. Having the trademark will make that process easier. We are, and will remain, IFYE; but using International Farm Youth Exchange™ consistently and appropriately protects our historical name. As we move forward with our proposal to seek funding from the USDA’s 2023 Farm Bill using International Farm Youth Exchange™ will, we hope, benefit us in the process because it immediately reminds others who we are and what our history is.

You will also note the™ superscript at the end of International Farm Youth Exchange™. This™ says to everyone that IFYE claims the term and has filed for protection.

Many IFYE alumni, past and present Board members, and Board committee members have contributed over the years to this effort. Thanks to all of you for your diligence and your support in moving this forward. Now, we wait!

2023 World IFYE Conference Pre- and Post-Tours

Bob Ellis, Membership Co-Chair

rellis@ifyeusa.org

The IFYE Membership committee has begun to search for interesting and exciting tours for everyone to experience both prior to and after the 2023 World IFYE Conference. The conference site is in Velden, Austria and will be from August 27th until September 2nd, 2023.

We have received many thoughts from fellow IFYEs about what they are looking for in pre- and post-conference tours. Those thoughts and information are being taken into consideration.

We are working with a prominent tour operator that is not your everyday vacation specialist. They customize tours to include your normal cultural tour options with an agricultural twist. We have also been in discussions with a well-known travel agent that specializes in cruises to all corners of the globe regarding post-conference possibilities.

As soon as I receive more information and can finalize our tours, you will be the first to know what we are excited to offer.

Bank Change

Keith Ferris, Vice President and Finance Chair

kferris@ifyeusa.org

IFYE has successfully changed bank affiliation to PNC Bank, a Pittsburg, PA based bank. As of April 1, 2022, the IFYE Association is actively using PNC Bank for all our banking needs, including credit cards used for IFYE business. Cards are issued to the IFYE Program Director, Interim Executive Director, and our President.

PNC Bank has many more branches where we can make donation deposits than our previous bank. Also, we have a business banker assigned to our account to help with problems and/or questions that might arise. This change will allow service from branches around the country.

COMING SOON to our website

2016 IFYE Taylor Hannon (Nebraska to Luxembourg and Costa Rica) has created a video about her IFYE experience and how to apply.

Watch for the announcement for location on our website. you may also view this on social media at: <https://www.facebook.com/IFYEUSA> (Posted March 16, 2022)



Time and Change

As I have navigated through life, observing what is going on around me, I often think of a phrase that is in my university's alma mater "time and change will surely show how firm thy friendship, O-HI-O." What does that have to do with IFYE? So much that it is amazing.

Carolyn S. Hansen
Interim Exec Director
chansen@ifyeusa.org
309-261-1705

The friendships forged in IFYE are everlasting. Think of all of the members of the IFYE Family: Participants including Ambassadors, Teen Caravanners, SPIFYEs, YDPs,

Host Families, and Friends of IFYE. Collectively, we bring a wide variety of experiences, talents, and skills. I believe one of the most common traits we share with each other is our always interesting and divergent insights to any given situation that affects our organization.

I joined the Board in January 2019; since then, I've seen the addition of new programs and sponsors such as commodity groups. The Board:

- has worked to improve and codify the policies and procedures of our organization and we have streamlined many of our financial and accounting procedures to be better stewards of your donations.
- added the Membership Committee to address ways to engage more alumni and provide services which have long been needed. In the last two years, we have reached out to you with several surveys seeking your insights asking how we can better serve you and strengthen the organization.
- taken many of your comments to heart and put them into action.

We are beginning to see an increase in the engagement of younger IFYE alumni on the Board of Directors and on our national committees. Their involvement is critical as they can help us understand what is important to prospective IFYE candidates. Today's collegians and young adults are concerned about making an impact on the way they spend their time and other resources. We must work to ensure we are not just a time-tested organization; we must also ensure that we are a relevant one!

This newsletter contains information about other changes such as: moving to a new bank, trademarking efforts, and new recruitment efforts at trade shows and career conferences. Perhaps, the most important is our work to have IFYE programs recognized and included in the 2023 Farm Bill. (See page 8.)

Since January, your staff members have:

- weekly sent at least two letters of inquiry and/or grant proposals for donations external to our IFYE Family.
- followed up on numerous contacts made at trade shows and career fairs.
- developed marketing materials such as a backdrop, 'pillowcase' signs, and a new brochure all designed to tell our story to prospective participants, host families, and donors. You will see all these at the conference in Normal in a few short months.

Country Expansion / Re-Opening

One change that needs immediate attention is the expansion of our program to new countries. In the past, we have relied on IFYE alumni beyond our borders to host and promote our program. That is still important; we will continue to do just that. Please keep in mind we did not have the outbound or inbound program the past two years, our number of recent IFYE classes are much smaller than those of the 60's through the 80's and the number of those alumni is steadily diminishing. Frankly put, our pool of contacts is not where we need it to be. We must investigate other ways to make important contacts in the USA and outside our borders. We serve an important mission of "Peace Through Understanding." To reach IFYE's program potential, we must establish relationships with new countries and re-establish our program in countries where IFYE relationships flourished years ago.

We are looking at a variety of ways to open doors through USDA and through agri-business contacts. If you communicate with individuals from your IFYE and other international experiences, let's talk so we can make some great things happen. An introduction from you might pave the way to establishing a program in a new country.

Prospective IFYE candidates have told us they are interested in experiences in Africa and Spanish-speaking countries. Ties you have with global agribusinesses, commodities, and associations are also important. Help us find the best way to contact them to start to investigate the possibilities. These efforts will result in benefits for IFYE. We will receive some great international contacts, increase awareness that IFYE is a vital and dynamic organization, and we will - hopefully - establish partnerships.

Partnerships – While donations and grants are critical to our very existence, creating a partnership built on mutual respect and providing promotion of their brand and possibly identifying future employees and leaders is equally important. This takes time. With every request for funds, we try to connect the organization or business to local ties and opportunities. We cannot accomplish this without your help. It is very easy to turn down a person from the "corporate office" compared to a friend or client with whom they have a relationship.

Out of curiosity – what are some of the words of YOUR school's alma mater that remind you of the message of IFYE?

As indicated at the beginning of this article, all of these "changes" take "time" and they are "firm"ly established with our IFYE "friendships." See what I mean? Time and change – they're not just words in a song of an alma mater, they are the cornerstone on which we are founded. Your contribution and investment of information about contacts and how to best reach them will help IFYE make a stronger impact around the globe.

As always, please reach out to me with questions, comments and, of course, suggestions for improvement. Your voice matters!

Carly Claucherty
(Michigan)



Current status/future goals

Pursuing Master’s degree in Crop and Soil Science

Previous International Experience

- Traveled to Central America with FFA for a cultural and agricultural immersion trip visiting and helping on various farms
- Traveled to Asia through a national student leader exchange program living with host families in four different parts of one country
- Participated in the Entrepreneurship and Development: Agriculture & Environment Studies program in Central America

Ag-related experience

- Research Assistant in Weed Science
- FFA member for four years and raised sheep, chickens, helped in the greenhouse, and participated in educational programs
- Studied Crop and Soil Sciences, working in potato breeding, corn, wheat and soybean breeding, and weed science
- Field crop research

Host Countries:

Germany - (F)



Sophie Cole
(South Dakota)



Current status/future goals

- Working as a registered nurse at a state penitentiary
- Bachelor of Science degree in Nursing
- Minors in Spanish and Health Education
- Third generation IFYE family

Interests

- Traditional and organic gardening and farming
- Small business functions
- Childhood education

Other experiences

Gained experience in obtaining and processing labs, critical thinking, nursing judgment, working as a team member, medication administration, communication skills, and management of emergency situations

Austria - (S)



India - (F)



Alec Dompka
(North Carolina)



Current status/future goals

- Master’s degree in Environmental and Natural Resources
- Bachelor of Science degree in Economics

Interests

- Creating economic models of agricultural markets and international trade
- Water quality and global access due to climate change
- Agricultural labor supply and markets, international trade and water quality

Austria - (S)



Rachel Gray
(North Carolina)
United Soybean Board (USB)



Current status/future goals

Graduating from university in May 2022 with Bachelor of Science degree in Ag Business

Ag-related experience

- 4-H, FFA
- Currently working on the family’s dairy farm; helping with the planting, drilling, and harvesting of crops and working/caring for cattle. Plays a huge role in the planting & harvesting of crops. Comfortable using equipment and being around livestock.

Interests

- Agriculture, economics, and environmental advancements
- Sustainability and advancements

Germany - (S)



Marit Hovey
(Iowa)



Current status/future goals

University Global Resource Systems (GRS) major

Previous International Experience

- Worked with farmers in Uganda
- A minor in Women and Gender Issues after seeing women’s issues in Uganda
- Completed an ecological restoration project at the US Virgin Islands National Park

Ag-related experience

- Works part time as a social media Communications Assistant at Practical Farmers of Iowa
- Teaches a 10-week Leadership and Professionalism course to Freshmen and Sophomore GRS students at university with two other university senior GRS students
- Has served as an AmeriCorps volunteer at [LSI Global Greens](#) in Des Moines, IA working with former refugee farmers to run a farmers’ market. Worked with the farmers to help combat challenges like language barriers, COVID-19, and land access
- Served as a cultural ambassador at university paired with an international student to complete different activities

Host Countries:

Morocco - (S)



India - (F)



Sarah Liepold
(Colorado)



Current status

2021 high school graduate

Ag-related experience

- 4-H, FFA
- Background in livestock industry (market beef and sheep), consumer science and decisions
- Raised and showed cattle and sheep for seven years
- Interested in agriculture - specifically livestock and related industries and how they are similar and unique in different countries around the world

Interests

- Consumer science - sewed clothes and costumes and made handmade jewelry for at least seven years as well as competing in Consumer Decision Making 4-H Competition at the state and national levels
- Owns a small business making and selling wire-wrapped jewelry, and has participated in Denver, CO Startup week

Wales - (S)



Dexter Lynch
(Michigan)



Current status/future goals

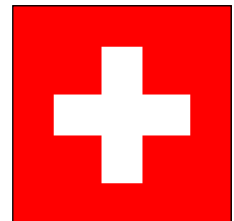
- Mechanical Engineering major
- Current degree path in mechanical engineering with a global engineering concentration to develop and design common products that people across the world use in their day-to-day life
- Plans to work in product design for sustainable consumer goods

Ag-related experience - 4-H, Robotics team

Interests

- Internships in engineering fields and pharmacy technician
- Creates products that make people’s lives easier and more efficient
- Sustainability and planning to eliminate any materials from personally created designs that would harm the environment

Switzerland - (S)



Josie Noland
(Iowa)
United Soybean Board (USB)



Current status/future goals

Graduating 2022 with Bachelor of Arts degree

Ag-related experience

- 4-H
- Worked in a soybean research lab for two years

Interests

- Environmental toxicology
- Holistic health and wellness
- Public health
- Role of food and water in society

Other

- Community Advisor for student residents
- Grew up in a rural Iowa community

Germany - (S)



Johari Snell
(Missouri)



Current status/future goals

- Bachelor of Science degree in 2022 with double major in Food Science and Global Food Systems
- Minor in Ag Business

Ag-related experience

- Led a group of five students to Springfield, Missouri to study their efforts in a sustainable ecosystem focusing on water, energy, and recycling
- Works in the university office to help plan and organize multicultural student conferences and activities as well as mentoring [Project ImPACT](#) students weekly. Also, assists any full-time staff on pending projects, programs, and office work.

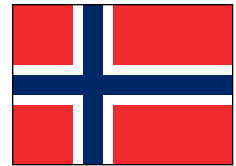
Host Countries:
Slovenia - (S)



Kenya - (F)



Norway - (S)



Kenya - (F)



Rebecca Pratt
(Illinois)
Compeer
Financial



Current status/future goals

- University graduate with Bachelor of Science degree in Agriculture & Consumer Sciences
- Self employed with family farm

Ag-related Experience:

- 6 years of all aspects of 40-acre family farm, assisting parents with managing invasive plant species
- Soil testing intern
- Ag lab data collection of plant samples
- Horticulture assistant

Interests

Gain international experience through cultural immersion, network with others to better define agriculture future path.

Cora Rhode
(Colorado)



Current Status/future goals

- University graduate with Bachelor of Science degree in Business Administration with Marketing Emphasis, minor in graphic design
- Collegiate Scholar athlete
- Continue career as a marketing specialist and professional photographer

Ag-related experience

- 4-H
- Business plan development for a rice bank

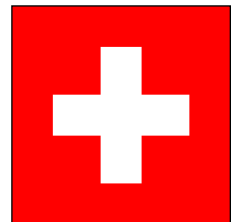
Previous International Experience

University mission class to Cambodia

Interests

- Creating relationships to assist in business development, international business
- Painting
- Photography

Switzerland - (S)



Morocco - (F)



Host Country
Norway - (S)



Traci Ross
(Kansas)



Current status/future goals

- Second-grade teacher
- 2019 college graduate majoring in Elementary Education

Ag-related experience

- 4-H including: working with sheep, chickens, gardening, rockets, photography, fiber arts, food, and woodworking
- State finalist for study of the Great Plains ecosystem

*Anne Thompson
(Michigan)*



Current Status/future goals

- Completing Bachelor of Science degree with National Forest internship in spring 2023
- Hope to work in Alaska leading expeditions

Ag-related experience

- 4-H (youth member, National 4-H Conference, and adult leader)
- Milked over 300 cows for large farm
- Michigan Youth Conservation Council
- Outdoor recreation, parks/nature reserves

Interests

Outdoor recreational activities, leadership activities, library events organizer

Host Countries:

Luxembourg - (S)



*Jackson Tubbs
(Iowa)*

United Soybean Board (USB)



Current Status/future goals

- Printer & Manager at an office store
- Future career in wildlife conservation and forestry

Ag-related experience

- FFA (competing in most aspects of agriculture - veterinary science, agronomy, forestry/ecology, conservation, extemporaneous speaking)

Interests

- Outdoor recreation
- Shooting sports
- Historical subjects

Germany - (S)



*Phillip Wessel
(Illinois)*

United Soybean Board (USB)



Current Status/future goals

- University degree in Environmental Science, Political Science, Marine Biology
- An AmeriCorps team leader of 12 volunteers aged 18-26 on a 10-month program across national projects

Ag-related experience

- Family farm
- FFA
- AmeriCorps
- Projects involving sustainable agriculture

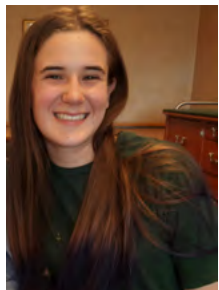
Interests

May continue education with Master's degree in Entomology
Outdoor activities such as hiking and rock climbing

Germany - (F)



*Catherine Wolyn
(Colorado)*



Current status/future goals

- University student studying biomedical sciences
- Assisting on a research project studying [Pygmy Slow Lorises](#)
- Working for a center helping to care for elderly residents and people with dementia

Ag-related experience

- Working at the Pueblo, CO zoo
- Participated in FFA Vet Science for four years

Interests

- Interested in both veterinary/human medicine and in land stewardship and sustainability
- Within veterinary and human medicine, areas of interest include comparative medicine and working with the elderly
- While working for Soil Stewardship, developed an interest for sustainable pesticide and fertilizer use, the importance of native plants, and organic waste recycling

Wales - (S)



Morocco - (F)



Farm Bill 2023 and IFYE

Barb Batie, IFYE Farm Bill Chair

bbatie@ifyeusa.org

In the fall of 2020, the IFYE Board of Directors began considering a proposal to the U.S. Congressional Agriculture Committees for funding through the 2023 Farm Bill. A year ago, the Board created a Farm Bill Sub-committee in an effort to secure this federal funding. The Farm Bill Subcommittee was formed to collaborate with the House and Senate Ag Committees, Senate Legislative Council, and corresponding Appropriations Committees on language supporting our \$2 million funding request.

Committee Chair is Barb Bierman Batie, Nebraska; Ken Gordon, former IFYE Executive Director, is our consultant. Other members include Keith Olsen, Nebraska; Larry Gould, Michigan; Russ Mauch, North Dakota; and Keith Ferris, Ohio. Advisors include IFYE alum Steve Censky and Cicely Wardyn, a friend of IFYE and former Senate staff member.

We must make some key decisions regarding the Title under which we will seek the funding. The language has to be carefully crafted so we have the best possible chance of receiving funding. We are told that Congress rarely names specific organizations in any bill to receive the funding directly. Rather, we will have to apply for the funding, if appropriated, through a recognized government agency such as Foreign Agricultural Service (FAS) under Title III¹ or National Institutes of Food and Agriculture (NIFA) under Title VII².

In recent weeks, Committee members have been researching the pros and cons of Title III and Title VII. Ken Gordon and I have begun the process of reaching out to both House of Representatives and Senate Ag Committee members' staffs. Ken has drafted an action plan for the next several months. Jan Wood, Carolyn Hansen, Keith Ferris, as well as Barb and Ken, have drafted an operating model and an operating budget which will be provided to both the Congressional Ag committees at the appropriate time.

As we move through this process, stay tuned as the Association's Farm Bill Sub-committee will be asking for your support in a couple of ways.

- In the late spring and throughout the summer, we'll be asking Association members to send letters and emails to the Ag Committee members
- Later, during the August Congressional recess, we want our IFYE alumni and other IFYE Family members to engage in conversations with their House and Senate representatives while the representatives are on home ground.
- It will be critical for IFYE members to share why it is important to have this funding in the 2023 Farm Bill.
- Talking point letters will be shared at the National Conference in Illinois and on the IFYE website.
- At some point, there will need to be an all-out email and letter campaign to all our elected Congressional representatives. If you have any special connections with your Congressperson or Senator, please let us know. Also, if your Congressperson or Senator is on one of the Ag Committees, please contact me at bbatie@ifyeusa.org.

¹ Agricultural Trade and International Food Assistance Programs

² Research, Extension, and Related Matters

A New IFYE STORE is now open!

Sheri Swackhamer, Membership Co-Chair

sswackhamer@ifyeusa.org

Your IFYE Membership Committee is proud to introduce our newest IFYE STORE where you can shop for clothing items, bags, backpacks, hats, sweatshirts, sweatpants, tote bags, infant attire, and more! The shop is open 24/7, 365 days of the year for your convenience. The store is a fundraiser for IFYE with 10% built into the price of the items.

- Anyone can shop from our store as the clothing and bags can be personalized with the IFYE standard logo. **NOTE:** Items may only be purchased with one of the two logos – “1972 Alumni” or the standard IFYE logo.
- Certain items may also be name-personalized with a last name or nickname or even a year that you traveled.



Each order placed will be made according to your wishes – and parameters as listed in the IFYE Store. Orders will be shipped in about two weeks after personalization has been completed.

Logos and placement

- Except for t-shirt material, all logos will be embroidered onto the items ordered as specified **NOTE:** Items made of t-shirt material will be embossed with a high-quality stamped or heat-transferred logo instead of being embroidered.
- There are two logos available: 1972 Alumni OR standard IFYE logo – depending on the item chosen, they will have a white background or transparent background.
- Logo placement will vary according to the item ordered.
- Please read the item descriptions carefully for fabric and fiber content and for logo placements as any orders placed for personalization cannot be returned.



Attention 1972 - As a special feature of our IFYE STORE, look for the “1972 Alumni” category on the left-side of the clothing-type filters, where IFYEs from that travel year may order their 50th Anniversary Polo shirts in a vast array of colors. You will be able to personalize your name on the right sleeve, if desired, and you can choose from the IFYE 1972 Alumni logo OR the standard IFYE logo.

Order now so you can show your IFYE pride during our summer National Conference in Bloomington-Normal, Illinois.

Thanks for shopping with IFYE! <https://teamlocker.squadlocker.com/#/lockers/ifye-store>



2022 National IFYE Annual Conference June 30 - July 3, 2022

What fun things do you think about when you remember summer vacation from school? Do family vacations, hot dogs, picnics, adventures with your

friends, watermelon, corn on the cob, and just hanging with your friends come to mind? If so, the 2022 IFYE Annual Conference, when IFYEs GET THEIR KICKS ON ROUTE 66 from June 30 – July 3 is where you need to be to reclaim some of those memories and/or create new ones.

The Illinois IFYE Association and the IFYE Association Board of Directors are co-hosting the national annual conference this summer in Normal, Illinois. The program promises some education, inspiration, and fun for this All-American Midwestern event. Go to [2022 IFYE Conference Registration | News & Conferences | IFYE \(ifyeusa.org\)](https://www.ifyeusa.org/2022-ifye-conference-registration-news-conferences) to register. Below are a few highlights from the planned events.

This year, the committee has planned a few pre-conference activities we think will be fun and hope you will join us.

Wednesday, June 28 – IFYE Night at the Corn Crib

The Illinois Corn Growers Association and the Illinois Soybean Association are hosting us as the CornBelters, a collegiate farm baseball team play the Springfield Sliders in this All-American sport. A typical Midwest buffet of picnic food is part of the evening’s enjoyment. *Thanks to our sponsors, there is no fee for this evening’s entertainment and meal, but we do need you to register so we can plan for tickets and food.*



Thursday, June 29

Pre-Conference Tour to “Lincoln Land in Springfield” 8:30 AM - 4 PM \$70

The registration cost for this tour includes transportation, lunch, entrance into all museums and sites in Springfield, Illinois – home of President Abraham Lincoln.

This day-long tour will take you to Lincoln’s Tomb, the Lincoln Home National Historic site, a tour of the Abraham Lincoln Presidential Museum and lunch in a restaurant close to the museum. If time permits, you can also visit the Old State House or the Lincoln Library; both are within a block of the museum.

Pre-Conference Workshop 9:30 – 11:30 AM Food Insecurity.

There is no fee for the workshop and you do not need to register in advance.

Pre-Conference Service Project 1:30 – 4:00 PM Midwest Food Bank

We will go to the Midwest Food Bank for two hours of community service sorting or bagging food or whatever is necessary. **To volunteer**, please complete this link in advance: <https://x.gldn.io/t8E5t1qynb>

Thursday, June 30 – Official Opening of the Conference – Welcome to Illinois and Route 66

The members of the IFYE “classes” of 1972 and 1982 will carry in the flags and after a tasty meal, be prepared for a humorous yet informative presentation from Terry Ryburn, owner of [Ryburn Place](https://www.ryburnplace.com). This restored site on Route 66 is also known as the Sprague Super Service station.

Friday, July 1

Enjoy a hearty continental breakfast

Tours - please go to [2022 IFYE Conference Registration | News & Conferences | IFYE \(ifyeusa.org\)](https://www.ifyeusa.org/2022-ifye-conference-registration-news-conferences) for descriptions and fees.

- 🌐 Tour #1 – Quilt Shop Hop
- 🌐 Tour #2 – Central Illinois, Funks Family Homestead
- 🌐 Tour #3 – Pontiac, IL and Route 66
- 🌐 Tour #4 – Central Illinois: Known for its Green Energy and Agriculture
- 🌐 Tour #5 – The Spirits of Central Illinois

Christmas in July at the Ewing Manor – Enjoy dinner under the tent on the grounds of the Ewing Manor, home to Wrigley heiress, Hazle Buck Ewing. Included in the evening program are a tour of the Manor and our annual Live Auction. We will then cross the cobblestones to the Ewing Theatre, an amphitheater for the Illinois Shakespeare Festival production of “Much Ado About Nothing.” This evening is sponsored by Compeer Financial.

Saturday, July 2

Enjoy a full breakfast.

- 🌐 The annual meeting of IFYE where business is conducted and accomplishments are highlighted will begin at 9:00 AM. You may also attend the meeting via Zoom at no charge but please register in advance
- 🌐 Afternoon Workshops:
 - Lincoln’s Ladder to the Presidency featuring Guy C. Fraker
 - Central Illinois Contributions to Global Agriculture
 - Host Family and Participant Recruitment – recommended for State Coordinators and Contacts
 - Regional and State Association Re-engagement – recommended for those interested in establishing associations.
- 🌐 National and International Night
 - IFYE Photo
 - Closing Reception
 - International Banquet - After a buffet dinner of Street Tacos, Asian and Italian culinary delights, we will travel with recent IFYEs as they share their stories of Taiwan and Thailand. We will sing a few patriotic songs of the United States and then be inspired by the candle lighting and closing of the conference.

Sunday, July 3 – Travel Home via Route 66

- 🌐 Continental Breakfast
- 🌐 Inter-faith Service

Continued on next page

Reunions

We are pleased we will have two reunions this year – 1972 and 1982. Information about the Class of 1972 lunch and activities is on the conference website opening page under Pre-Conference Activities. More information about the activities of the 1982 Class will be coming in the next few weeks to those IFYEs.

Auctions

Once again, the Live and Silent Auctions raise money for IFYE program expenses. We hope your state group and you will consider preparing a basket or provide an item for auction. Bring your checkbook, cash, or credit card. Illinois IFYE Alumnus Paul Rice will keep you bidding at the Live Auction!

Hospitality Suite

Our goal is to keep the hospitality suite open more hours than just the evening after banquets. In order to do that, we ask for your help. In the Midwest, we're proud of our potluck meals; you know the kind, where everyone pitches in to bring something and to provide food.

We're going to ask you to reach back in your memories to the time when IFYEs brought with them their favorite, desserts, snacks, and beverages. It was fun; in the spirit of IFYE, we exchanged recipes, got to try new foods, and enjoyed relaxing with our IFYE Family. We're asking that you consider contributing to the 2022 Conference Hospitality Suite and bring food and beverages with you.

We'll provide the paper goods, glasses, some snacks and hope you'll join in on the fun. We are also seeking donations from area food vendors. Because the hospitality suite is not everyone's "cup of tea," we feel it is important for those who use it, to contribute to it, just as we contributed (and some of us still do) to our church potlucks!

Helpful Websites

- This site will help you plan your trip to and from the Bloomington-Normal area: <https://www.enjoyillinois.com/plan-your-trip/places-to-go/>
- Route 66 sites in Illinois: <https://www.cruisinwithlincoln66.org/>
- Things to see on Route 66: <https://www.drivingroute66.com/10-things-to-see-on-route-66-in-illinois/>
- To get to here from there, along Route 66, try this website: <https://www.theroute-66.com/state.html>
- Welcome to Bloomington-Normal: <https://www.visitbn.org/>

Bringing the Family?

If you are planning on bringing the family to the conference, please contact either conference Co-Chair – Jonna Burck at jburck@ifyeusa.org or Carolyn Hansen at chansen@ifyeusa.org. We will help you with good ideas and resources.

Next Steps?

Please register! Now that we've given you what we hope is a clear view of what to expect, we hope you'll either go to your computer and/or click on the following link to register: [2022 IFYE Conference Registration | News & Conferences | IFYE \(ifyeusa.org\)](https://www.ifyeusa.org/2022-IFYE-Conference-Registration-News-Conferences-IFYE-ifyeusa.org)

Please join us, whether Full-Time, Part-Time, or Virtual.

In the next few weeks, we will post more information to make your planning to come to the 2022 Annual IFYE Conference interesting and to help prepare you for your very own "Kicks on Route 66!" As they said in the 60's and 70's, "Be there or be Square!" See you soon!





IFYE Association of the USA, Inc.
Peace Through Understanding

Permission to share my generosity via IFYE's annual donor list.

_____ Yes, IFYE can share my name on the annual donor list.
_____ No, I prefer my donation/name remain anonymous.

2022 IFYE Postal DONATION FORM

NOTE: If wishing to pay online, please go to <https://ifyeusa.org> and click on "Ways to Give"
This online area will include automatic recurring monthly, quarterly, semi-annual, and annual donations.

Please check the appropriate box(es) for the support you wish to provide to the IFYE Association. Mail the form and completed action(s) that you have selected and check(s) to: **Roger Sherer, PO Box 452, Bluffton, IN 46714-1112**
(If questions, please contact Roger at rsherer@ifyeusa.org)

PLEASE COMPLETE:

NAME(s) _____ EMAIL _____

ADDRESS _____ CITY _____ STATE__ ZIP _____

HOME PHONE _____ CELL PHONE _____

IFYE FAMILY MEMBER _____

(Program participant (list program), Host Family Member, Friend, and/or Supporter, etc.)

I/We wish to support IFYE in 2022 with the following donation: \$5,000 \$2,500

\$1,000 \$750 \$500 \$250 Other Amount \$ _____

- **Donations of non-life members will also include an award of a 2022 annual membership if donation is \$30 or more.** Since the IFYE Association of the USA, Inc. is a 501(c)(3) organization, funds contributed by the Donor are generally eligible for tax deduction consideration, subject to the donor's tax situation. Please consult your tax professional to confirm deductibility.
- **ALL life and annual members** have access to the Member Portal area on the website. Please request below.

I/We wish to become a **Life member(s)**

_____ \$900 paid per individual in a **payment plan** to be completed by 12/31/2026.

_____ \$1000 paid per individual on **payment plan** by 12/31/2026 if one-time offer criteria cannot be met.

_____ \$1000 paid in one lump sum per individual if one-time offer criteria cannot be met.

Please contact Associate Treasurer (Roger Sherer) rsherer@ifyeusa.org for further details. Thank you.

NOTE: 2022 OFFER: If a person has an annual membership for each of the past three years (2019, 2020, 2021) or has already donated \$100 last year or this year, IFYE will credit \$100 toward the Lifetime Membership amount of \$1,000. Thus, only \$900 will become due for your Lifetime Membership.

Enclosed is \$20 for the postal mailing of two IFYE NEWS and issues of the IFYE UPDATE published during 2022.

PAYMENT METHOD

I/We have enclosed **check #** _____ in the amount of \$ _____ payable to **"IFYE Association of the USA"**.

Please send me/us (by email) access information to the IFYE website "Award Membership area".

My email address is: _____

I am/We are unable to financially support IFYE. Please remove me/us from the *contact for donation* list.

THANK YOU FOR YOUR SUPPORT of IFYE

01/01/2022

The IFYE Association of the USA, Inc. shall make its services, facilities, and programs available to all persons regardless of race, color, creed, gender, gender variance, age, disability, marital status, sexual orientation, or national origin, and the Association shall not in any way discriminate against any person on the basis of race, color, creed, gender, gender variance, age, disability, marital status, sexual orientation, or national origin.

<http://ifyeusa.org>

Anna Parker Joins the IFYE Board

Jan Wood, President

Anna Parker from Montana has been invited to join our IFYE Association Board of Directors. Anna was a 1998 IFYE to Finland. She grew up on her parent's diversified farm in North Central Montana. She has a BS in Agricultural Business and an MA in Public Administration. She currently works for the USDA.

Anna has been a frequent attendee of the European IFYE conferences and has also attended some World IFYE Conferences.

We welcome her to the Board.



IFYE Association of the USA, Inc.
PO Box 216
Williamsburg, MA 01096

POSTAGE

ADDRESS SERVICE REQUESTED

Moving? New 911 Address?

Send mailing label corrections to IFYE NEWS (return address above) OR
vwarnar@ifyeusa.org



Visit: <https://ifyeusa.org>

IN MEMORIAM

The passing of the following individuals has come to our attention since publication of the IFYE NEWS (Fall/Winter 2021)

*LM = Life Member
SPIFYE = Spouse of an IFYE*

R. Dale Bell (*New York to Australia 1958*) October 06, 2020
David Benedetti (*Oregon to Mexico 1965*)

December 29, 2021 LM

Dorothy A (Halverson) Blodgett (*Washington to The Philippines 1956*) June 29, 2021

Susan K (Balfany) Cammack (*Minnesota to Botswana 1974*) March 10, 2022 LM

John T Capps III (*North Carolina to Spain 1967*)

January 27, 2022 LM

Blanche (Franklin) Chilcote (*California Host Family*)

March 29, 2019 LM

Gail Jeanne (Stanley) Croke (*Illinois to United Kingdom 1983*) February 12, 2022 LM

Dr. Lawrence E Foote, Ph.D. (*Michigan to Italy 1957*)

March 26, 2022

Eula Mae (Murrey) Goodfellow (*Kansas to Belgium 1955*)

February 10, 2022 LM

John B Hitchcock (*Washington to Argentina 1972*)

February 18, 2021 LM

Mary M (Peg) Hoffman (*Illinois to New Zealand 1954*)

December 20, 2021 LM

Louella Marlin (*Maryland to Travel Seminar 1984*)

February 02, 2021

Carl Matter (*South Dakota to Venezuela/Costa Rica 1965*)

December 08, 2021 LM

Kenneth H Mummert (*Pennsylvania to Australia 1959*)
November 30, 2021 LM

George E Nash II (*Wyoming to Venezuela 1957*)

December 22, 2019

Janice (Fenske) Peace (*Montana to Sweden 1948*)

December 09, 2021 LM

Gertrude (Gertie) Reichard (*Pennsylvania to Travel Seminar-Norway/Netherlands 1973*) LM

James (Jim) Riemann (*Kansas to India 1964*)

January 08, 2022 LM

Paul M Saunders Sr (*Virginia to Bolivia 1955*)

March 11, 2022

Pauline (Westcott Dennis) Schumann (*Vermont to Switzerland 1950*) December 29, 2021 LM

Elizabeth (Betty) L Stephenson (*Iowa to England/Wales 1952*) January 25, 2022 LM

Edward (Ed) R Stewart (*Missouri to Trinidad/Tobago 1980*) April 07, 2021

Dr. Max Stutz (*Kansas to New Zealand 1952*)

September 13, 2020

Elaine (Ellis) Watson (*Michigan to Peru 1965*)

January 03, 2022 LM

Beverly (Holsing) Wright (*South Dakota to Switzerland 1960*) January 22, 2022 LM